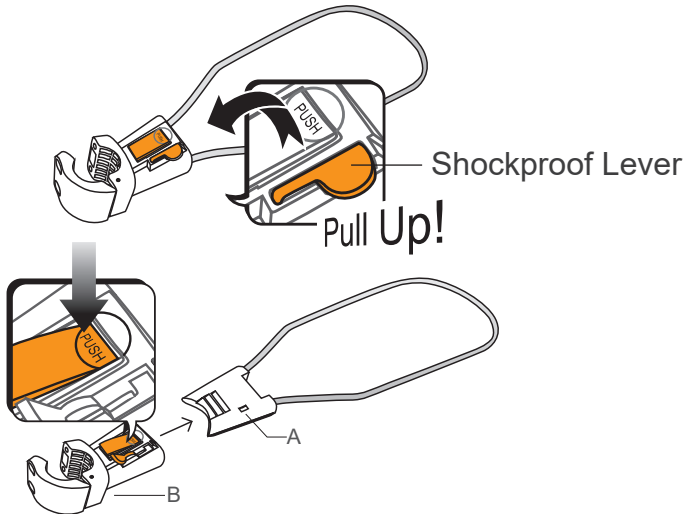


Ø 25.4mm ~ 27.2mm



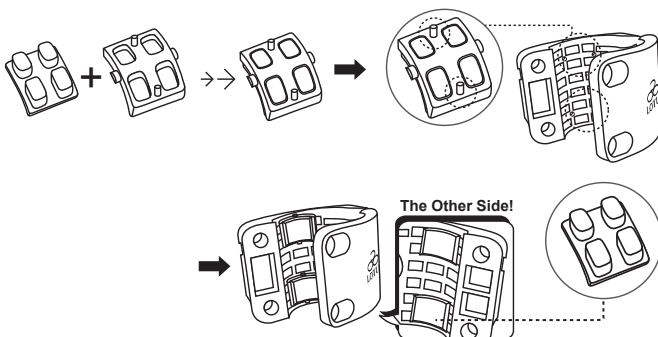
Process

- 1 Pull up the safety lever, and then push the button to release the frame(A) from the mounting bracket(B).



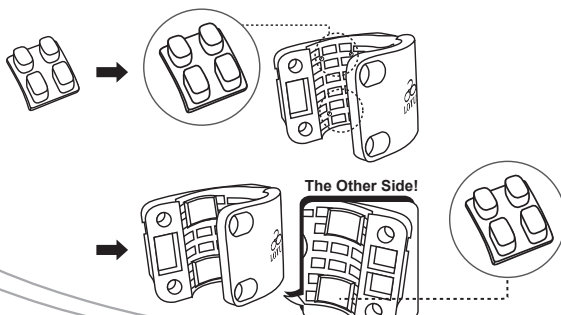
Ø 25.4mm ~ 27.2mm

- 2 For seat posts of 27.2mm or smaller diameter, push a soft pad into each of the two hard pads and insert the two sets in the left side of the mounting bracket, as illustrated. Insert the remaining two soft pads in the other side of the mounting bracket.



= Ø 31.8mm

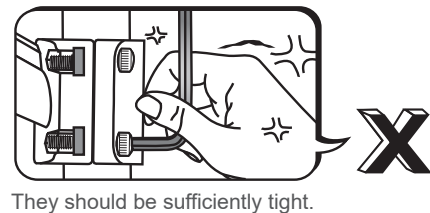
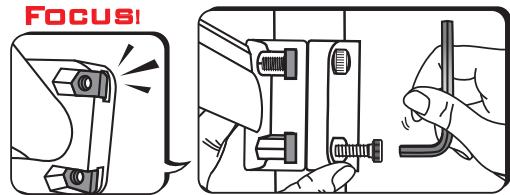
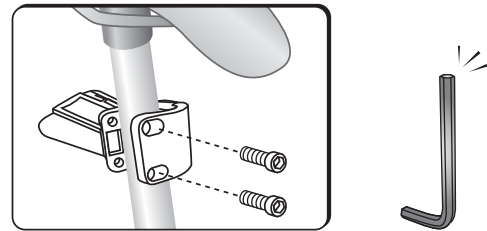
- For seat posts of 31.8mm diameter, insert two soft pads in each side of the mounting bracket, as illustrated.



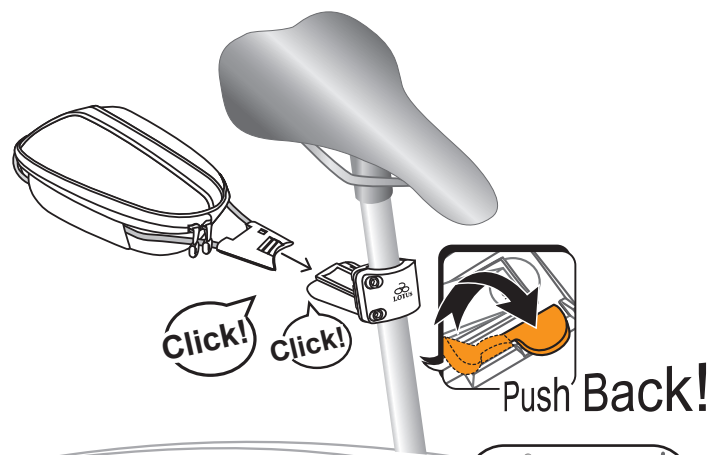
= Ø 31.8mm



- 3 Close the mounting bracket around the seat post. Use the Allen key to screw the bolts onto the nuts at the back of the bracket.



- 4 Install the bag on the frame(A), and then insert the frame in the mounting bracket(B).
Push the safety lever into the closed position.



Ø 25.4mm ~ 27.2mm

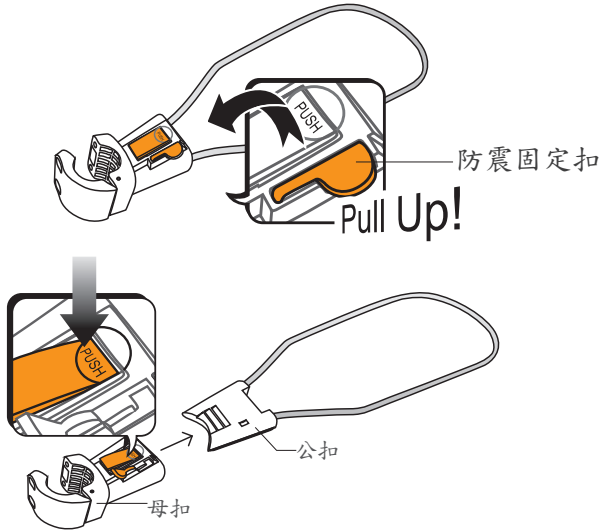


= Ø 31.8mm

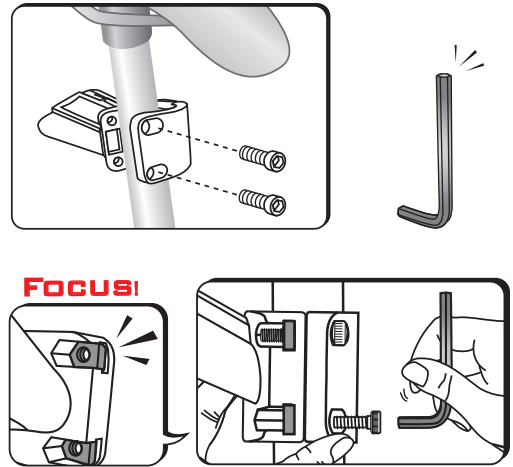


安裝說明

- 1) 側邊安全扣往上扳起
- 2) 將PUSH鍵往下壓，即可將公扣取出
(注意! 安全扣需打開，才能按下PUSH鍵，才能夠將公扣取出)



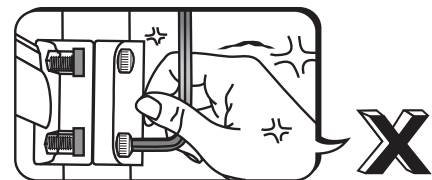
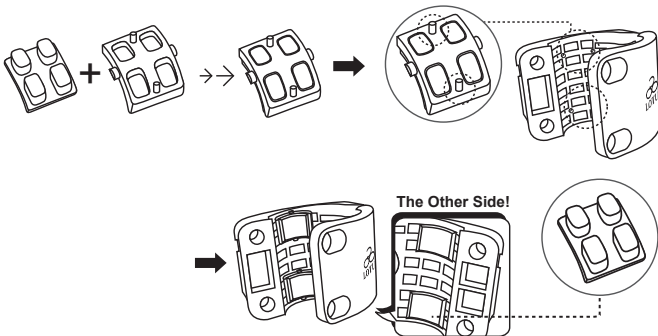
- 1) 請將貨架轉接頭相互對齊，再將螺絲陸續對準穿孔進行拴緊



Ø 25.4mm ~ 27.2mm

管徑25.4~27.2mm者

- 1) 將軟墊片與硬墊片做結合(共2組)
- 2) 組合完畢的墊片需對準左側轉接頭之基準點(如圖線所示)
- 3) 另一面轉接頭則使用軟墊片(上下各一組)，即完成墊片之組裝



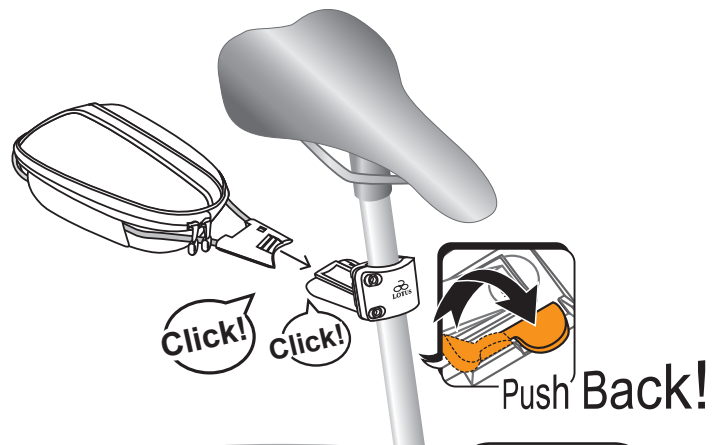
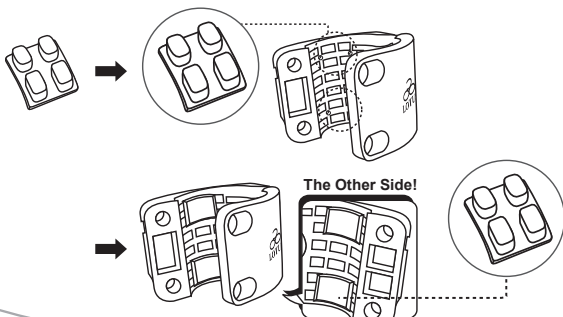
(注意!! 請勿將扣具鎖得太緊，否則易使貨架轉接頭損壞。)

- 1) 將公扣裝回貨架轉接頭(母扣)，卡榫為兩段式，扣回需有『卡!卡!』兩聲!
- 2) 將側邊安全扣往下扣回，即完成所有步驟
(注意! 安全扣需確實往下扣回，才具有安全固定之功能)

= Ø 31.8mm

管徑等於31.8mm者

- 1) 將軟墊片分別對準兩邊轉接頭之凹槽區塊(上下各一個)，即完成墊片之組裝



CH ver. 3.0 2013/7/16
MADE IN TAIWAN

扣具使用溫度規範
不得低於-20°C